

0353-024

THIS INSTRUMENT PREPARED BY
DAVID P. LINDLEY

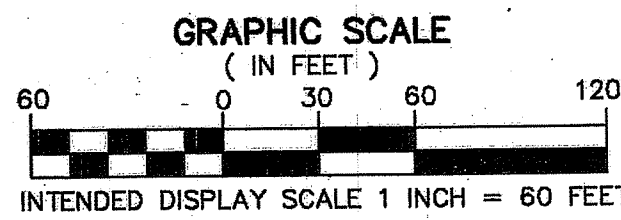
PALM BEACH PARK OF COMMERCE P.I.P.D. PARCEL 4

BEING A REPLAT OF PARCEL 4, PALM BEACH PARK OF COMMERCE P.I.P.D., PLAT NO. 1,
ACCORDING TO THE PLAT THEREOF, AS RECORDED IN PLAT BOOK 56, PAGES 172 THROUGH 176
OF THE PUBLIC RECORDS OF PALM BEACH COUNTY, FLORIDA,
LYING IN SECTION 18, TOWNSHIP 41 SOUTH, RANGE 41 EAST, PALM BEACH COUNTY, FLORIDA

CAULFIELD and WHEELER, INC.
SURVEYORS - ENGINEERS - PLANNERS
7900 GLADES ROAD, SUITE 100
BOCA RATON, FLORIDA 33434 - (561)392-1991

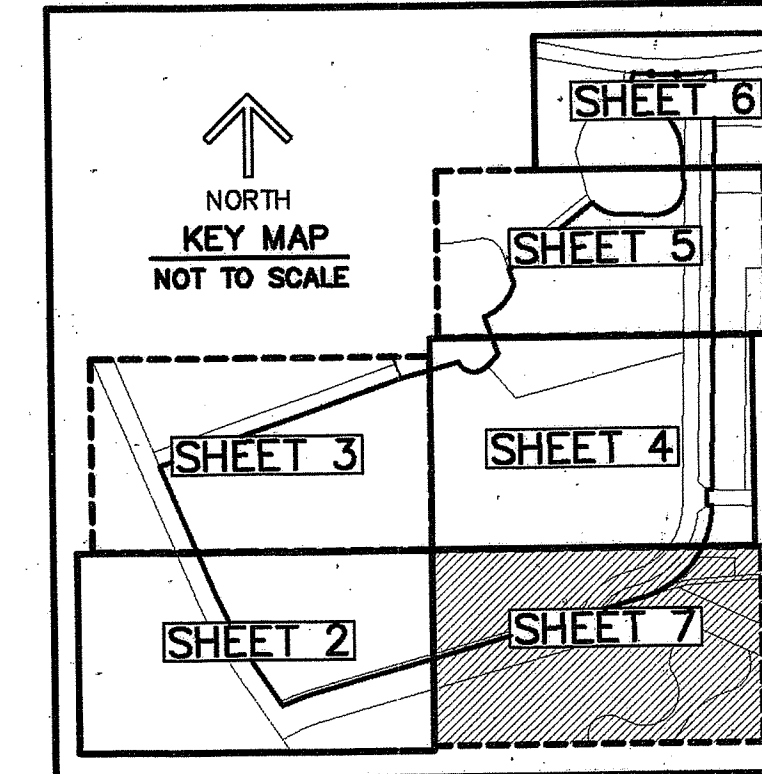
LEGEND ABBREVIATIONS

- Δ - DELTA (CENTRAL ANGLE)
- L - ARC LENGTH
- R - RADIUS
- AC - ACRES
- CB - CHORD BEARING
- CD - CHORD DISTANCE
- FPL - FLORIDA POWER & LIGHT CO.
- CL - CENTERLINE
- LB - LICENSED BUSINESS
- O.R.B. - OFFICIAL RECORD BOOK
- SF - SQUARE FEET
- N - NORTHING
- E - EASTING
- UE - UTILITY EASEMENT
- WMME - WATER MANAGEMENT MAINTENANCE EASEMENT
- PCP - DENOTES PERMANENT CONTROL POINT
- PRM - INDICATES SET 4" X 4" X 24" CONCRETE PERMANENT REFERENCE MONUMENT WITH ALUMINUM DISK STAMPED LB3591 UNLESS OTHERWISE NOTED.



NOTES

COORDINATES, BEARINGS AND DISTANCES
COORDINATES SHOWN ARE GRID
DATUM = NAD 83 1990 ADJUSTMENT
ZONE = FLORIDA EAST
LINEAR UNIT = US SURVEY FEET
COORDINATE SYSTEM 1983 STATE PLANE
TRANSVERSE MERCATOR PROJECTION
ALL DISTANCES ARE GROUND
SCALE FACTOR = 1.00004048
GROUND DISTANCE X SCALE FACTOR = GRID DISTANCE
BEARINGS AS SHOWN HEREON ARE GRID DATUM,
NAD 83 1990 ADJUSTMENT, FLORIDA EAST ZONE.



91

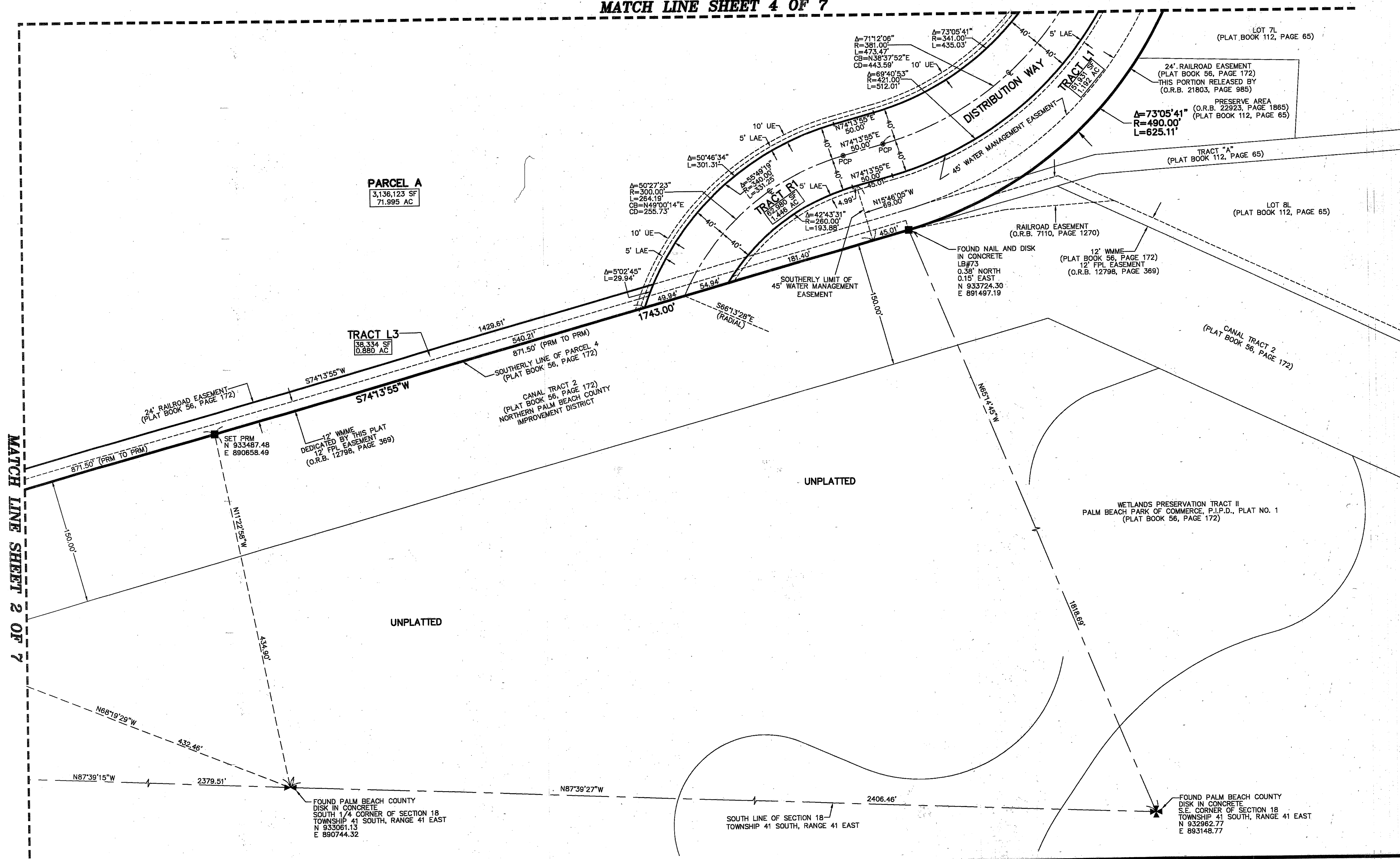
STATE OF FLORIDA
COUNTY OF PALM BEACH
THIS PLAT WAS FILED FOR
RECORD AT _____ M.
THIS _____ DAY OF _____
A.D. 201____ AND DULY RECORDED
IN PLAT BOOK _____ ON
PAGES _____ AND _____

SHARON R. BOCK
CLERK AND COMPTROLLER

BY: _____
DEPUTY CLERK

SHEET 7 OF 7

MATCH LINE SHEET 4 OF 7



MATCH LINE SHEET 2 OF 7

PARCEL A
3,136,123 SF
71.995 AC

TRACT L3
38,334 SF
0.880 AC

12' WMME THIS PLAT
DEDICATED BY THIS PLAT
12' FPL EASEMENT
(O.R.B. 12798, PAGE 369)

FOUND PALM BEACH COUNTY
DISK IN CONCRETE
SOUTH 1/4 CORNER OF SECTION 18
TOWNSHIP 41 SOUTH, RANGE 41 EAST
N 933061.13
E 890744.32

FOUND PALM BEACH COUNTY
DISK IN CONCRETE
S.E. CORNER OF SECTION 18
TOWNSHIP 41 SOUTH, RANGE 41 EAST
N 932962.77
E 893148.77